



GAT MONTHLY MEMBERSHIP PROGRESS REPORT

Results as of: 5/31/2024

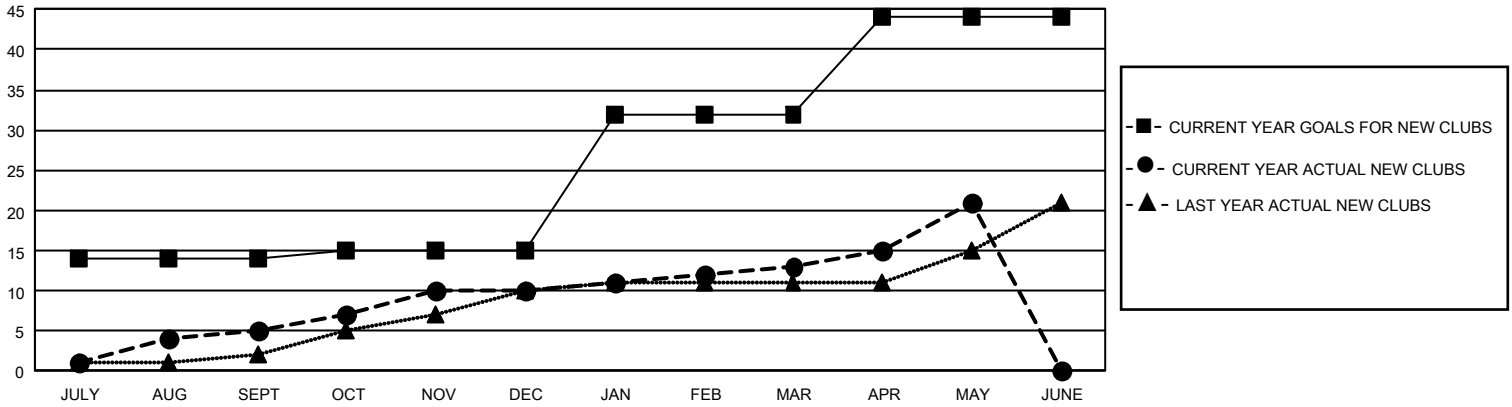
GMT Constitutional Area 3, Group C

REPORT DOES NOT INCLUDE CLUBS IN UNDISTRICTED AREAS.

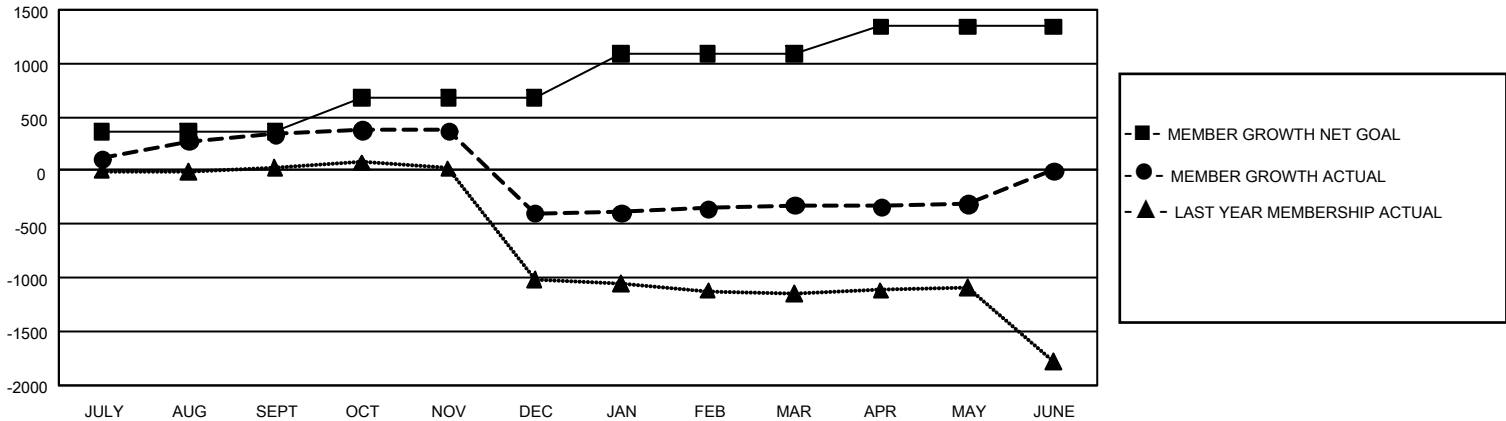
Clubs			
RESULTS FOR 2023-2024			
QUARTER	NEW CLUB GOAL	NEW CLUBS	DROPPED CLUBS
JULY/AUG/SEPT	42	5	4
OCT/NOV/DEC	3	5	20
JAN/FEB/MAR	51	3	6
APR/MAY/JUNE	36	8	8

Members			
RESULTS FOR 2023-2024			
QUARTER	MEMBER GROWTH NET GOAL	MEMBER GROWTH ACTUAL	DROPPED MEMBERS ACTUAL (including transfers)
JULY/AUG/SEPT	361	754	296
OCT/NOV/DEC	315	497	1,169
JAN/FEB/MAR	416	534	350
APR/MAY/JUNE	252	421	326

GOALS AND ACTUAL NEW CLUBS CUMULATIVE



GOALS AND ACTUAL MEMBERS CUMULATIVE



DROPPED CLUBS: 38	379 CLUBS OF 813 ADDED 1 OR MORE NEW MEMBERS	GENDER DISTRIBUTION	
		MALE 7,913 (48.78%) FEMALE 8,304 (51.19%) NON BINARY 0 (0.00%) PREFER NOT TO ANSWER 6 (0.04%)	
DROPPED MEMBERS		CLICK HERE FOR CUMULATIVE MEMBERSHIP DATA	TOTAL FAMILY UNIT MEMBERS 6,567
DECEASED 112 CLUB CANCELLED 425 OTHER 1,599 TOTAL 2,136			FAMILY MEMBERS PAYING HALF DUES 3,926